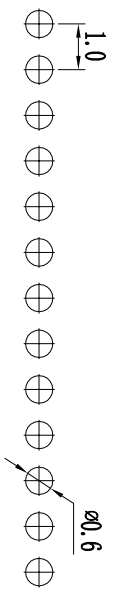
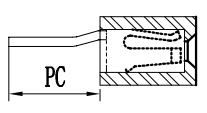
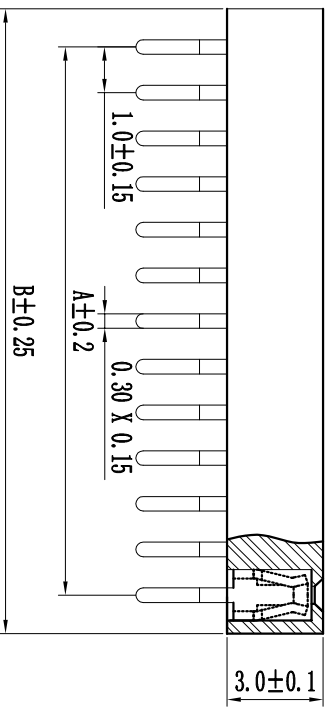
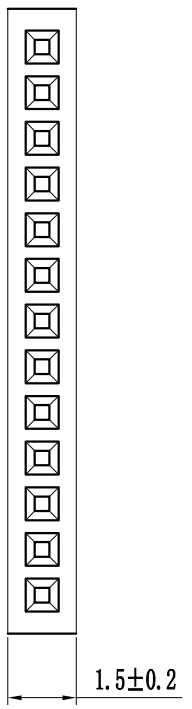
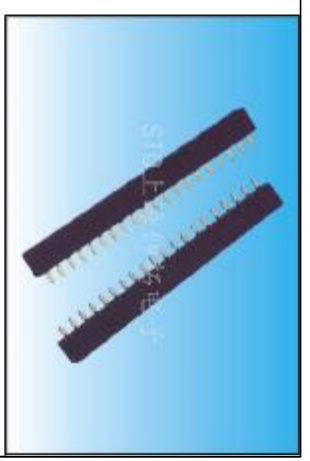


Pin#	尺寸A	尺寸B
1X2	1.00	2.40
1X3	2.00	3.40
1X4	3.00	4.40
1X5	4.00	5.40
1X6	5.00	6.40
1X7	6.00	7.40
1X8	7.00	8.40
1X9	8.00	9.40
1X10	9.00	10.40
1X11	10.00	11.40
1X12	11.00	12.40
1X13	12.00	13.40
1X14	13.00	14.40
1X15	14.00	15.40
1X16	15.00	16.40
1X17	16.00	17.40
1X18	17.00	18.40
1X19	18.00	19.40
1X20	19.00	20.40
1X21	20.00	21.40
1X22	21.00	22.40
1X23	22.00	23.40
1X24	23.00	24.40
1X25	24.00	25.40
1X26	25.00	26.40
1X27	26.00	27.40
1X28	27.00	28.40
1X29	28.00	29.40
1X30	29.00	30.40
1X31	30.00	31.40
1X32	31.00	32.40
1X33	32.00	33.40
1X34	33.00	34.40
1X35	34.00	35.40
1X36	35.00	36.40
1X37	36.00	37.40
1X38	37.00	38.40
1X39	38.00	39.40
1X40	39.00	40.40
1X41	40.00	41.40
1X42	41.00	42.40
1X43	42.00	43.40
1X44	43.00	44.40
1X45	44.00	45.40
1X46	45.00	46.40
1X47	46.00	47.40
1X48	47.00	48.40
1X49	48.00	49.40
1X50	49.00	50.40



PCB LAYOUT

PC
1.5
1.8
2.0



**技术规范:**  
 额定电流 : 1AMP  
 适用温度 : -40°C to +105°C  
 接触电阻 : 20mΩ Max  
 绝缘电阻 : 1000MΩ Min  
 耐电压 : AC 500V  
 绝缘材料 : Polyester (UL94V-0)  
 Standard: PA-6T  
 端子材质 : Bronze  
 电镀规范 : Au or Sn Over 50u" Ni

焊料系列	间距	厚度	焊盘	焊层	材料	角度	端子	备注
S-10	a-10	1-10	1-单排	1-10"	A-10"	S-10"	12.5mm间距25	0-3.0
S-10	a-10	1-10	2-双排	2-20"	B-20"	R-30"	11.0mm间距18	1-3.0/0.6 (双排)
S-10	a-10	1-10	3-三排	3-30"	C-30"	D-30"	11.0mm间距22	2-3.0/0.3 (双排)
S-10	a-10	1-10	4-四排	4-40"	E-40"	F-40"	10.0mm间距25	3-2.8/0.4 (双排)
S-10	a-10	1-10	5-五排	5-50"	G-50"	H-50"	10.0mm间距25	4-2.8/0.4 (双排)
S-10	a-10	1-10	6-六排	6-60"	I-60"	J-60"	10.0mm间距25	5-2.8/0.4 (双排)
S-10	a-10	1-10	7-七排	7-70"	K-70"	L-70"	10.0mm间距25	6-2.8/0.4 (双排)
S-10	a-10	1-10	8-八排	8-80"	M-80"	N-80"	10.0mm间距25	7-2.8/0.4 (双排)
S-10	a-10	1-10	9-九排	9-90"	O-90"	P-90"	10.0mm间距25	8-2.8/0.4 (双排)
S-10	a-10	1-10	10-十排	10-100"	Q-100"	R-100"	10.0mm间距25	9-2.8/0.4 (双排)

**STG** 上海狮拓电子科技有限公司

TOLERANCE:

X	±0.05
XX	±0.10
ANG.	

产品名称: \_\_\_\_\_  
 产品料号: \_\_\_\_\_  
 THIRD ANGLE PROJECTION

客户确认

姓名: \_\_\_\_\_ 日期: \_\_\_\_\_  
 日期: \_\_\_\_\_ 日期: \_\_\_\_\_  
 返回 \_\_\_\_\_ 日期: \_\_\_\_\_

1.00mm双排母, DIP, 塑高2.1mm  
 Spec: 1.00mm Female Header, Single Row, Straight  
 Positions: 1X1"X50  
 Plastics Height: 3.0mm