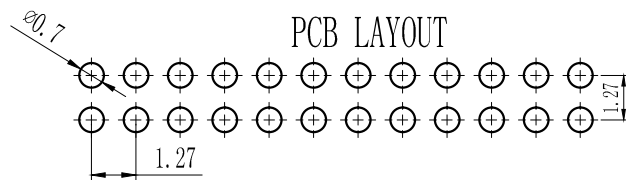
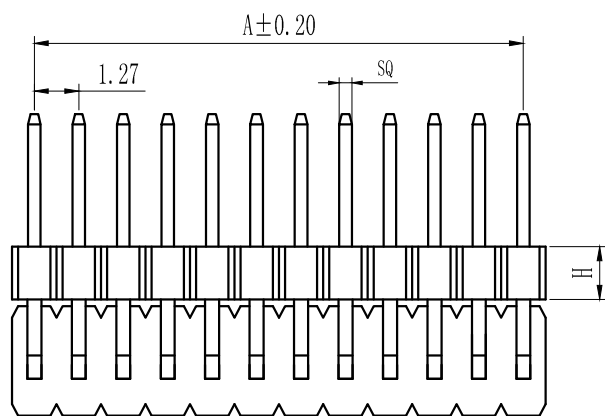
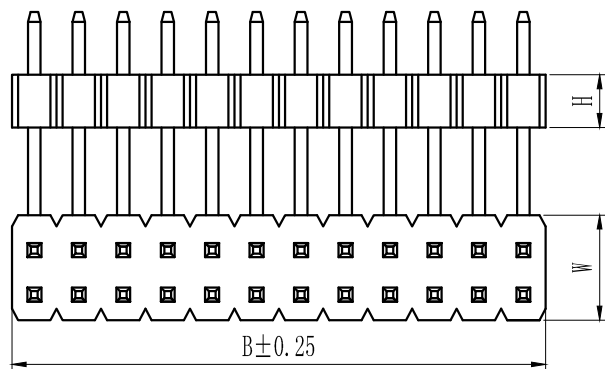
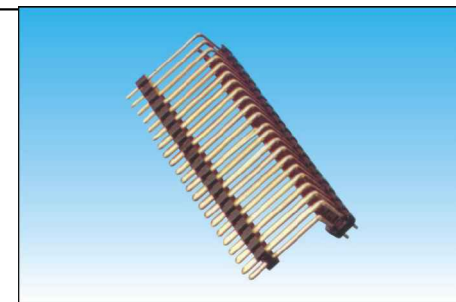
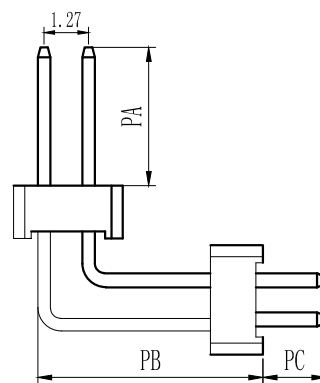


| Pin数 | 尺寸A   | 尺寸B   |
|------|-------|-------|
| 1    |       | 1.27  |
| 2    | 1.27  | 2.54  |
| 3    | 2.54  | 3.81  |
| 4    | 3.81  | 5.08  |
| 5    | 5.08  | 6.35  |
| 6    | 6.35  | 7.62  |
| 7    | 7.62  | 8.89  |
| 8    | 8.89  | 10.16 |
| 9    | 10.16 | 11.43 |
| 10   | 11.43 | 12.70 |
| 11   | 12.70 | 13.97 |
| 12   | 13.97 | 15.24 |
| 13   | 15.24 | 16.51 |
| 14   | 16.51 | 17.78 |
| 15   | 17.78 | 19.05 |
| 16   | 19.05 | 20.32 |
| 17   | 20.32 | 21.59 |
| 18   | 21.59 | 22.86 |
| 19   | 22.86 | 24.13 |
| 20   | 24.13 | 25.40 |
| 21   | 25.40 | 26.67 |
| 22   | 26.67 | 27.94 |
| 23   | 27.94 | 29.21 |
| 24   | 29.21 | 30.48 |
| 25   | 30.48 | 31.75 |
| 26   | 31.75 | 33.02 |
| 27   | 33.02 | 34.29 |
| 28   | 34.29 | 35.56 |
| 29   | 35.56 | 36.83 |
| 30   | 36.83 | 38.10 |
| 31   | 38.10 | 39.37 |
| 32   | 39.37 | 40.64 |
| 33   | 40.64 | 41.91 |
| 34   | 41.91 | 43.18 |
| 35   | 43.18 | 44.45 |
| 36   | 44.45 | 45.72 |
| 37   | 45.72 | 46.99 |
| 38   | 46.99 | 48.26 |
| 39   | 48.26 | 49.53 |
| 40   | 49.53 | 50.80 |
| 41   | 50.80 | 52.07 |
| 42   | 52.07 | 53.34 |
| 43   | 53.34 | 54.61 |
| 44   | 54.61 | 55.88 |
| 45   | 55.88 | 57.15 |
| 46   | 57.15 | 58.42 |
| 47   | 58.42 | 59.69 |
| 48   | 59.69 | 60.96 |
| 49   | 60.96 | 62.23 |
| 50   | 62.23 | 63.50 |



|      |
|------|
| SQ   |
| 0.40 |
| 0.46 |



技术规范：  
 额定电流：1.0AMP  
 适用温度：-40℃to+105℃  
 接触电阻：20mΩ Max  
 绝缘电阻：1000MΩ Min  
 耐电压：AC 500V  
 绝缘材料：Polyester (UL94V-0)  
 Standard:PA-6T  
 端子材质：Brass  
 电镀规范：Au or Sn Over 50u" Ni

| 排针系列 | 间距       | 塑高      | 双塑   | 单排   | PIN位      | 电镀     | 材质     | 角度      | 备注            |
|------|----------|---------|------|------|-----------|--------|--------|---------|---------------|
|      | a=0.8mm  | 1.0-10  | 1-单塑 | 1-单排 | 1~40P/50P | A-1u"  | A-PBT  | S=180°  | 0-3.0         |
|      | b=1.0mm  | 1.5-15  | 2-双塑 | 2-双排 | 2~40/50P  | B-3u"  | B-PA46 | R=90°   | 1-3.0/6.0(双塑) |
|      | c=1.27mm | 1.6-16  | 3-三塑 | 3-三排 | 3~40/50P  | C-5u"  | C-PA6T | M=SMT   | 2-3.0/3.0(双塑) |
|      | d=2.0mm  | 1.7-17  |      | 4-四排 | 4~40/50P  | D-10u" | D-PA9T | Z-Z型    | 3-2.8/4.0(双塑) |
|      | e=2.5mm  | 2.0-20  |      |      |           | E-15u" | E-LCP  | Y=135°  | 4-2.6/3.5(双塑) |
|      | f=2.54mm | 2.54-25 |      |      |           | F-30u" |        | L=卧式SMT | 其它另做说明        |
|      | g=3.96mm |         |      |      |           | S-镀锡   |        |         |               |
|      | h=5.08mm |         |      |      |           | H-半金锡  |        |         |               |

P a-10-1-2-5p-a-a-s-0

TOLERANCE:

X. ±XXX

.X ±0.20

.XX ±0.10

ANG.



上海狮拓电子科技有限公司

产品名稱:

产品料號:

THIRD ANGLE PROJECTION



簽名

日期

審核

日期

客戶確認

承認 \_\_\_\_\_ 日期 \_\_\_\_\_

校閱 \_\_\_\_\_ 日期 \_\_\_\_\_

1.27mm双排插针, 90°, 双塑  
 Spec:1.27mm Board Spacer, Dual Row, Right Angle  
 Positions: 2×1~2×50